

# Wet wipe chemical mixing system



25 April 2018

# Wet wipe chemical mixing system

**MGT Liquid & Process Systems started in 1969 as a producer of stainless steel tanks for the local industrial market.**

**Based on our thorough understanding of market requirements, we added agitators, mixers and mixing systems, process solutions and liquid transport solutions to our product portfolio. As part of the MGT Liquid & Process Systems Group, MGT's modern production facility specializes in the design and manufacture of custom, innovative stainless steel process systems.**

**In 2014, we refocused our efforts on providing the global pharmaceutical, cosmetic, food, chemical, ink and paint industries with our high-quality mixing and processing systems**

# Wet wipe chemical mixing system

## **MGT MIXING**

**A business unit of MGT Liquid & Process System Ltd.**

**Started in 2104 developing stand alone Mixing Systems for the Household & Personal Care Industry such as Wet Wipe Chemical Mixing Installations.**

**MGT Ltd is already for many working with.**

**Albaad, DPL, Tropical Dagil, & Kimberly Clark for various storage, mixing, solution.**

# Wet wipe chemical mixing system

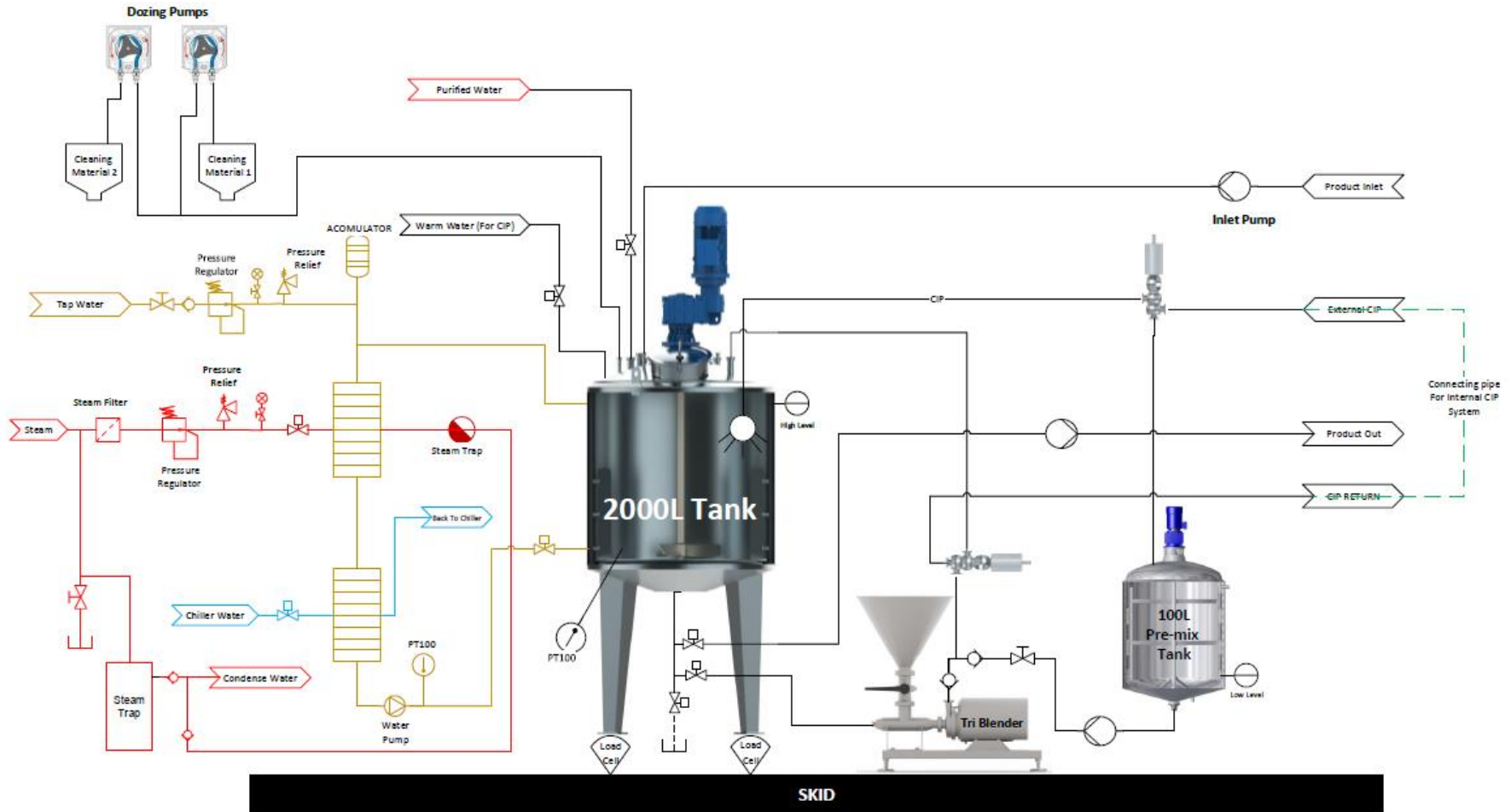
- **Chemical Mixing System**
- **CIP**
- **Automation & Visualization**
- **Axillaries**
- **Options**

# Wet wipe chemical mixing system

## Chemical Mixing System

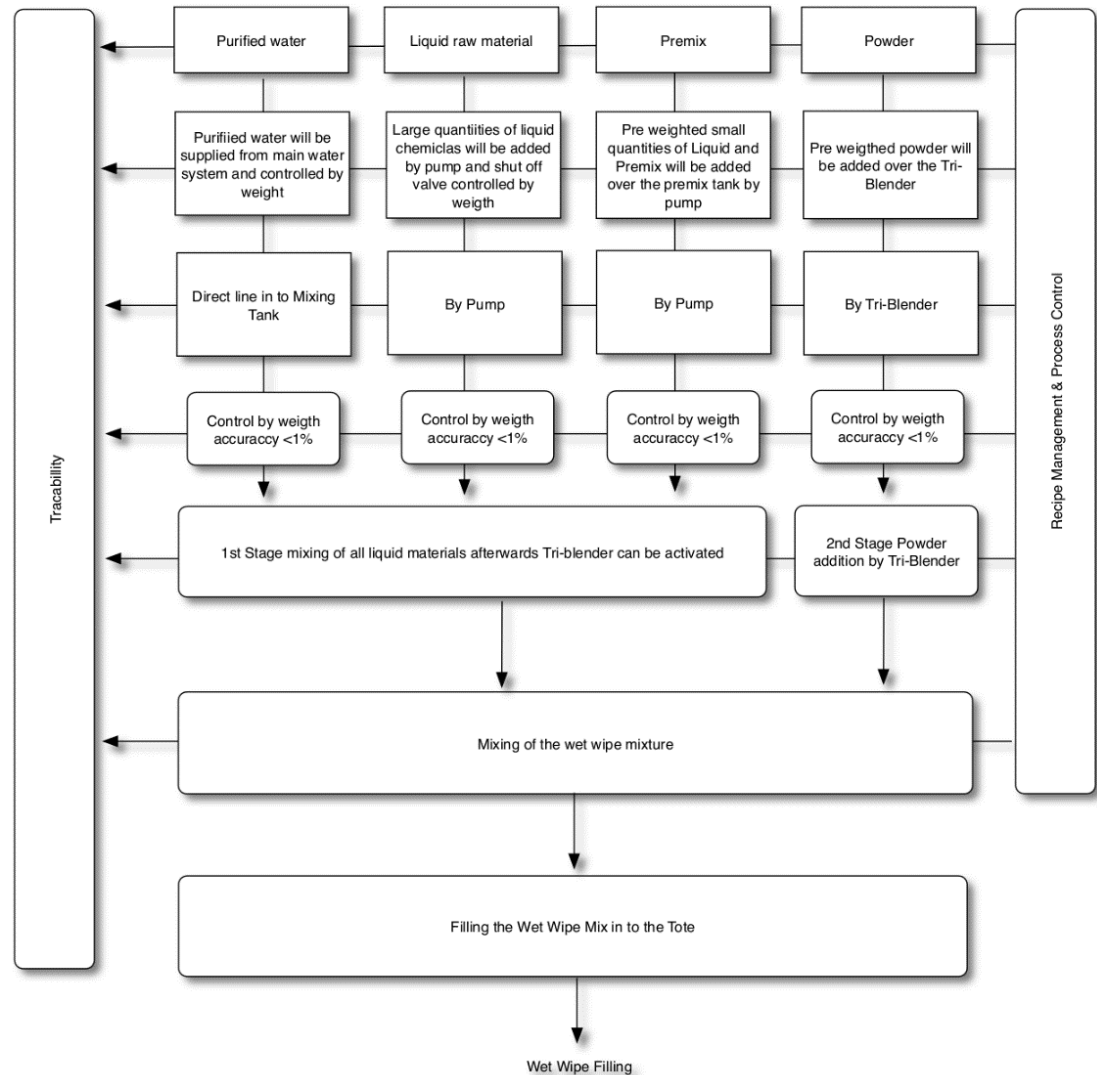
- **Tank**
  - 1x 2000 Liter Mixing Tank
  - 1x 100 Liter Premix Tank
- **Mixing**
  - 1x High Efficiency Agitator
  - 1x Marine type Agitator
  - 1x Tri-blender
- **Pumps**
  - 2x Sanitary 316 Stainless steel centrifugal pumps

# Wet wipe chemical mixing system



# Wet wipe chemical mixing system

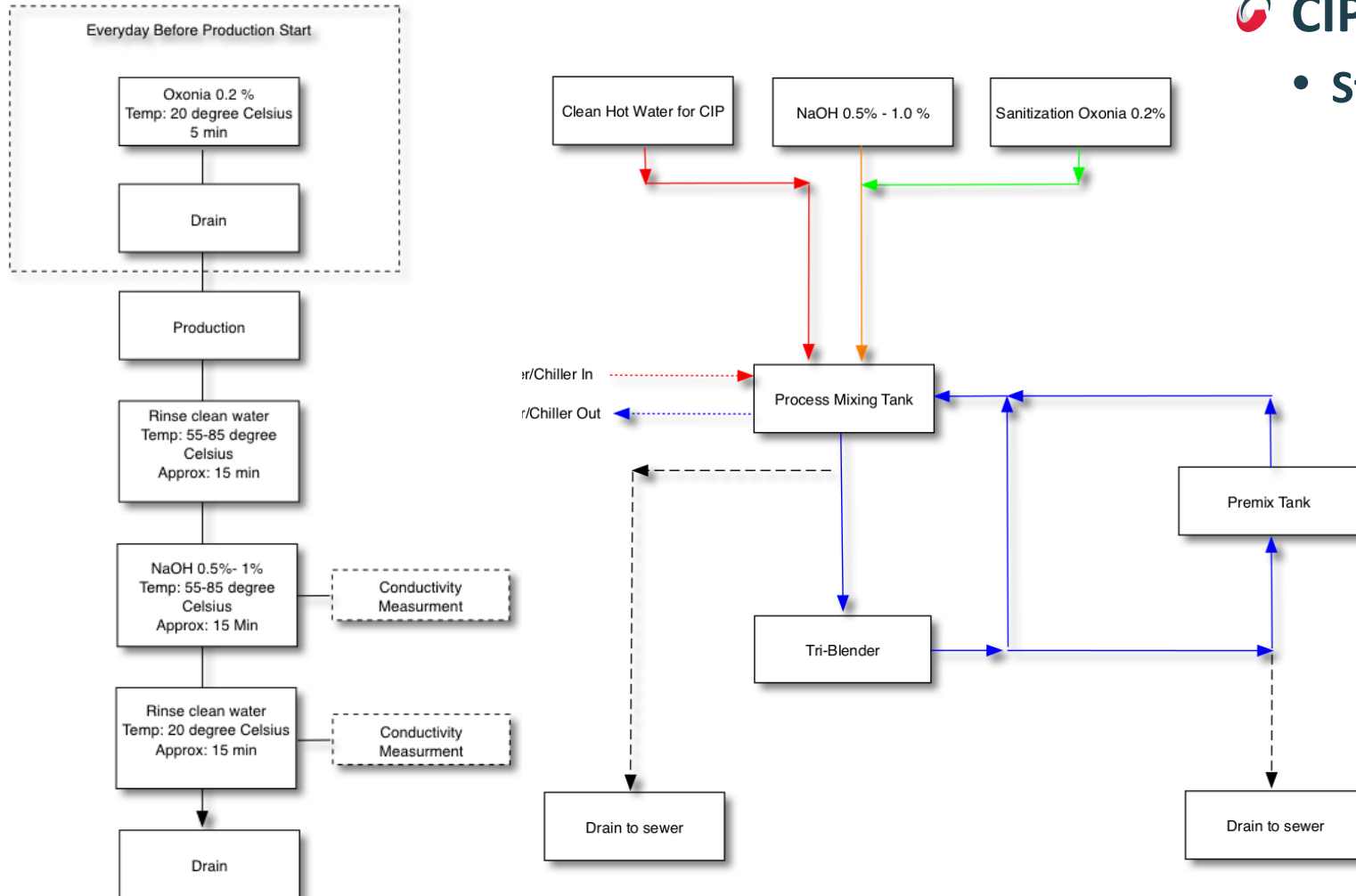
## Process Flow Chart



# Wet wipe chemical mixing system



- Stand Alone

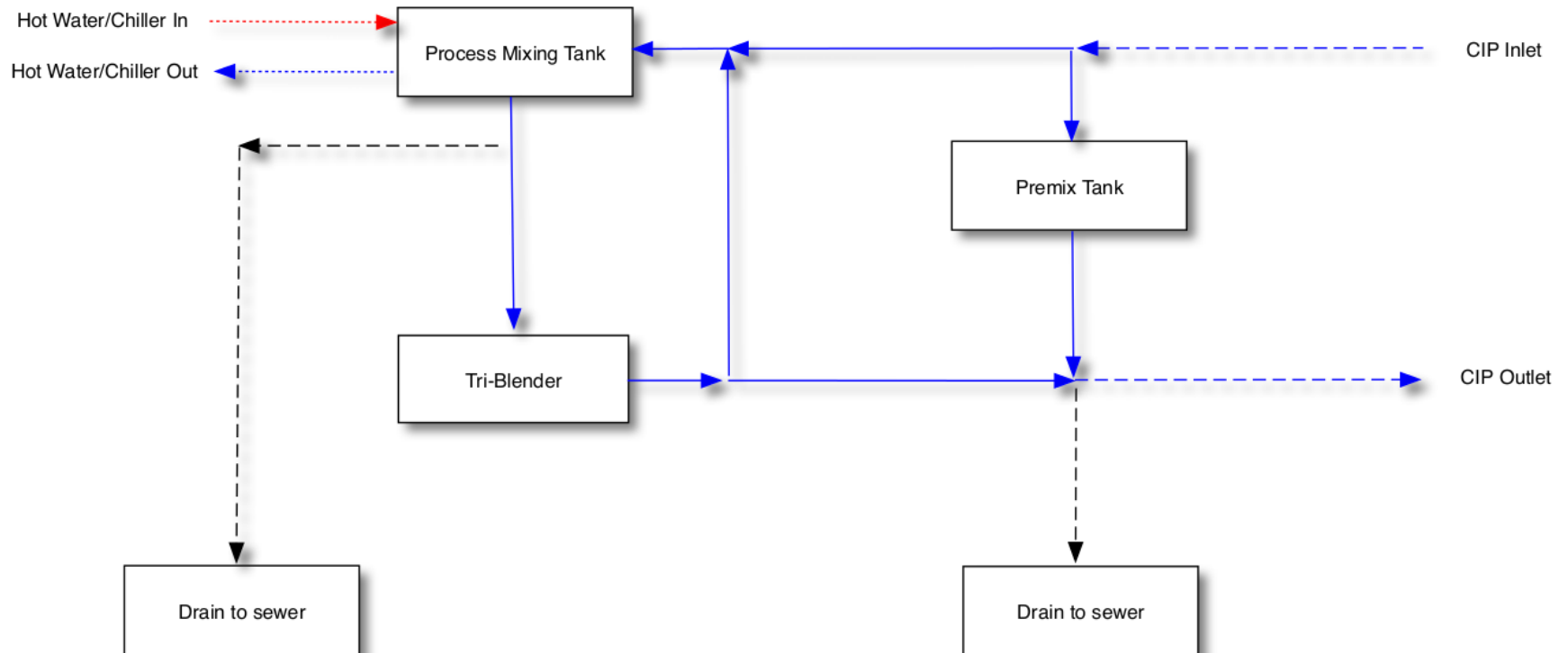




# Wet wipe chemical mixing system

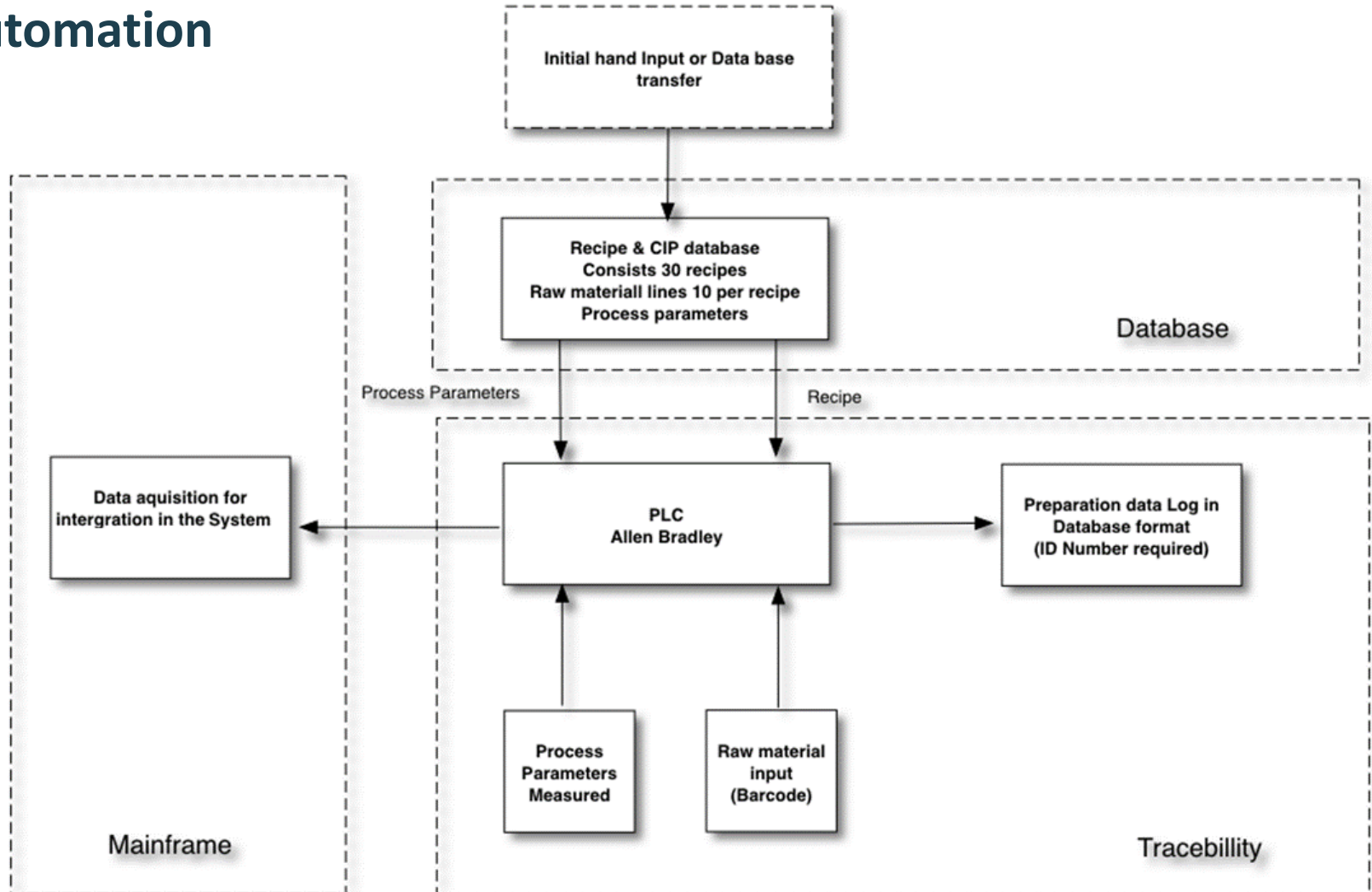
## CIP

- In line



# Wet wipe chemical mixing system

## Automation



# Wet wipe chemical mixing system

## Automation

### Hardware Supply

#### Allen Bradley Compact logix PLC with I/O cards

- The following types and maximum I/O quantities are assumed:
- Discrete Inputs:
- Type: 24VDC Inputs. Max. quantity: 50
- Discrete Outputs: Type: 24VDC Outputs. Max. quantity: 20
- Analog Inputs: Type: 24VDC, 4-20mA Inputs Max. quantity: 5
- Analog Outputs: Type: 24VDC, 4-20mA Outputs Max. quantity: 4

#### PC computer, Screen and modem.

- One PC computer and screen for the HMI software, recipes and report data.
- One modem with Internet access for remote programming and support.

Zebra ZT400 Series printer

# Wet wipe chemical mixing system

 Automation

 **Software Supply**

- One Wonderware Intouch Runtime software license

 **Application Development**

- PLC application is developed with RSLogix5000, ver20.03 series.
- PLC application is developed according to Process Description and Sequence Of Operation given by the customer.
- Recipe Manager for 30 recipes. (Upload & Download of recipes in MS Access format)
- Quality data logging per production batch
- Traceability from chemical to end product by barcode.
- Intergration in established computer network